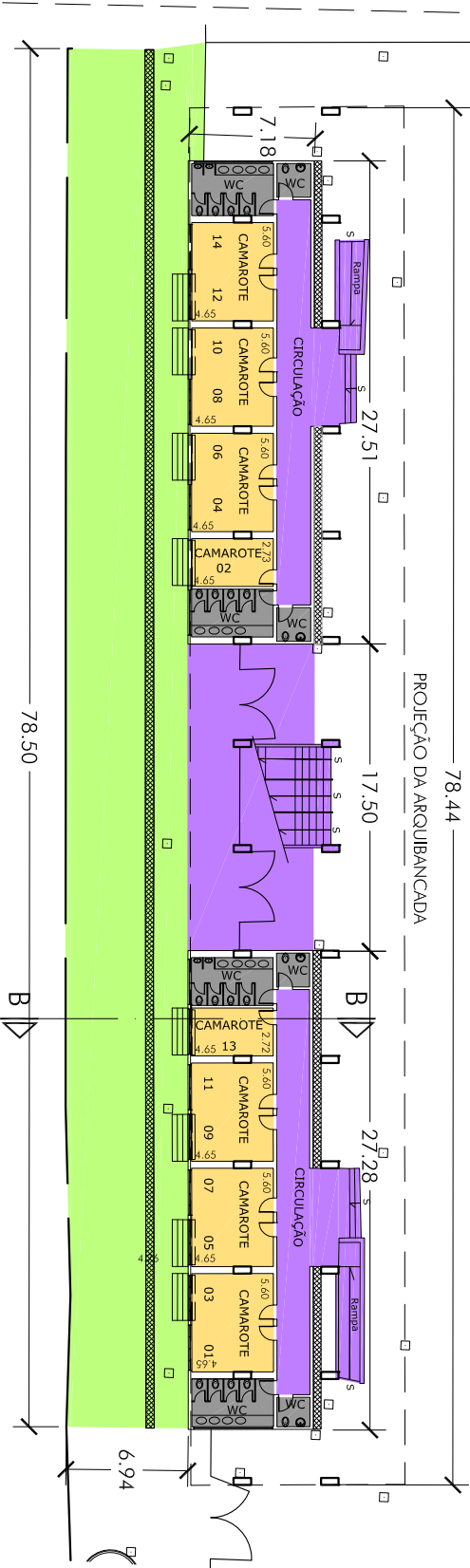
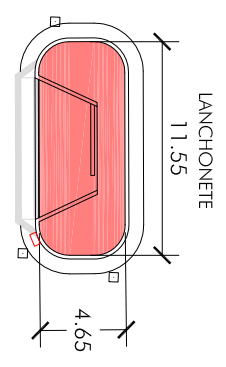
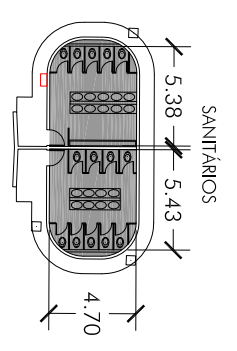
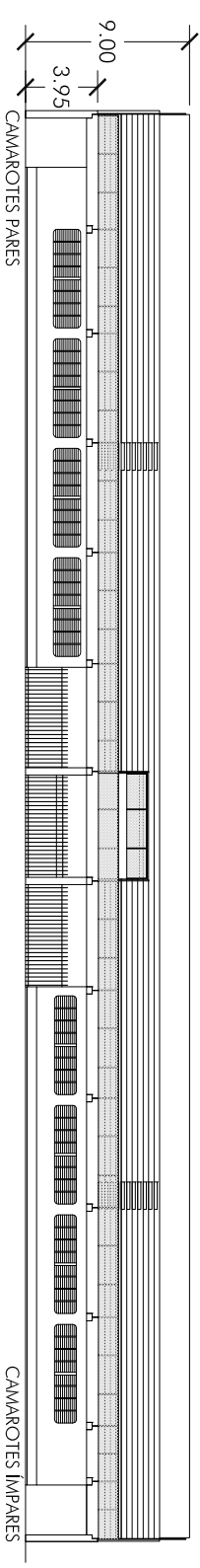


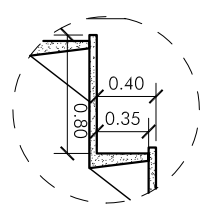
PLANTA - ARQUIBANCADA
ESC. 1: 400



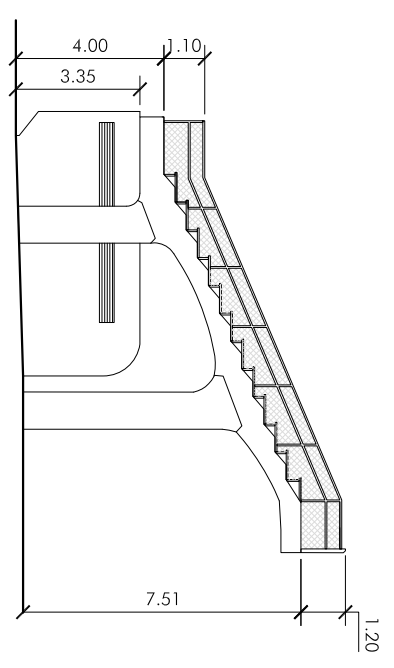
PLANTA - CAMAROTE MESA E CADEIRAS
ESC. 1: 400



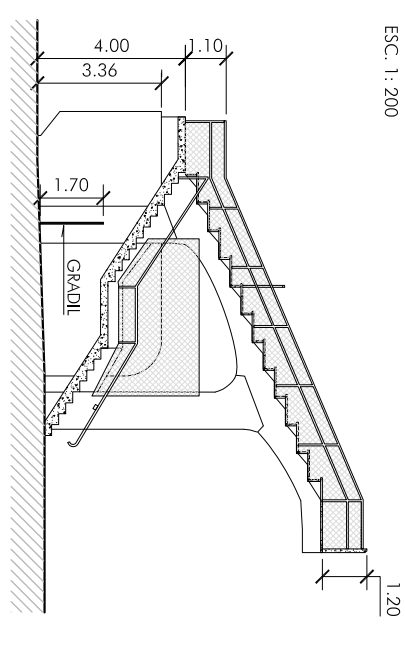
ELEVAÇÃO FRONTAL
ESC. 1: 400



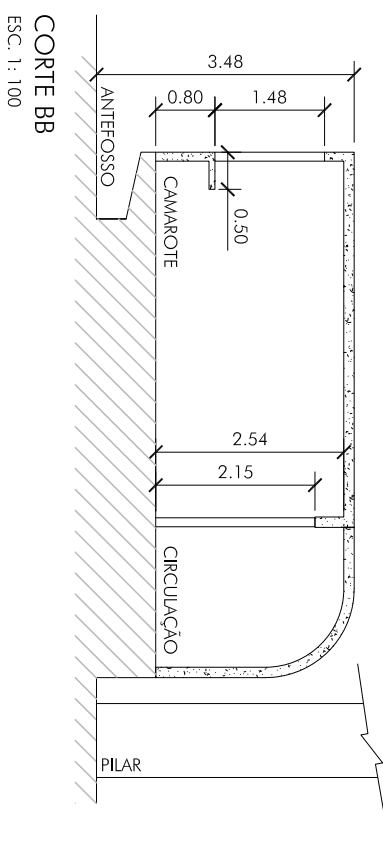
DET. ARQUIBANCADA
ESC. 1: 50



VISTA LATERAL
ESC. 1: 200



CORTE A-A
ESC. 1: 200



CORTE B-B
ESC. 1: 100

SETOR J			5 710,90 m ²
LOCAL	ÁREA	CAPACIDADE	
ARQUIBANCADA	956,90 m ²	11PO+11PMR+1718=1740	
CAMAROTES IMPARES	220,20 m ²	318	
CAMAROTES PARES	220,60 m ²	85	
CAPACIDADE TOTAL DE PESSOAS			2 265 pessoas

LEGENDA	
[Cyan]	ARQUIBANCADA
[Grey]	SANTIFÁRIOS
[Red]	LANÇONETE
[Purple]	CIRCULAÇÃO
[Yellow]	CAMAROTE
[Green]	MESA E CADEIRAS DE PISTA
[Blue]	CANALETA
[Black]	PO D
[Blue]	PMR (*)

(*) PESSOA OBRSA
(**) PESSOA COM MOBILIDADE REDUZIDA

PÓLO CULTURAL E ESPORTIVO GRANDE OTELO

ARQUIBANCADA E CAMAROTES - SETOR J

ARQUIVO:	ESCALA	DATA
1:\sgf\edp\01_01\arquitetura\pólo\01 - arena\locat\pólo\01_01-arquitetura\arquibancada setor j.dwg	indicado	MAR/2013
DIRETORIA DE INFRA-ESTRUTURA	RESPONSÁVEL TÉCNICO	FOLHA
Renato Ribeiro Nunes	Luzdalmir Baptista	sefor A-J 05
Raíso de Oliveira	Fernanda Borges	12